

Two-part h.design round floor drain (300 mm) D300/110V2/H2

ATT stainless steel floor drain features:



Vertical outlet DN110 or DN160



Horizontal outlet DN110 or DN160

- type AISI 304 (1.4301) or AISI 316L (1.4404),
- rounded surface, 300 x 300 mm,
- sheet thickness 1.5 mm,
- outer edges 4mm,
- round telescopic body diameter is 295 mm,
- adjustable in height between 90 and 145 mm, it is adjustable at 360° and tilting at 6°,
- body pressed without joints,
- rounded corners at the height of the bottom plate,
- an inspectable trap with EPDM seal in accordance with the European standard EN 1253,
- no stagnant water in the body of the drains according to EHEDG (flow 5,0 – 5,7 l/s),
- height of the water column is 50 mm with gluing frame 100mm (according to EN 1253),
- upper edge is equipped with a solid stainless steel reinforcement bar against the mechanical and thermal load according to EHEDG,
- waste basket (capacity 2,9l) with handle,
- adjustment screws with pivoting base,
- surface is pickled and passivated,
- upper edge grinded with a grain of 240.



Water trap



Waste basket

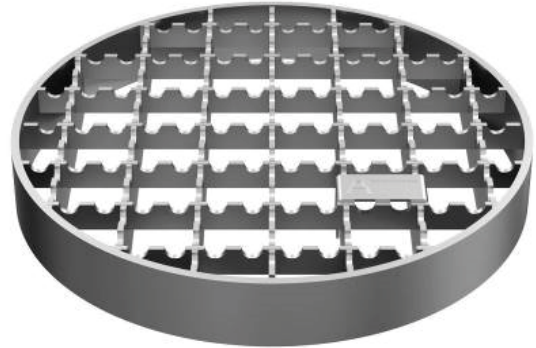


Sand basket

Grating of the floor drain (300 mm) D200/110V2/H2

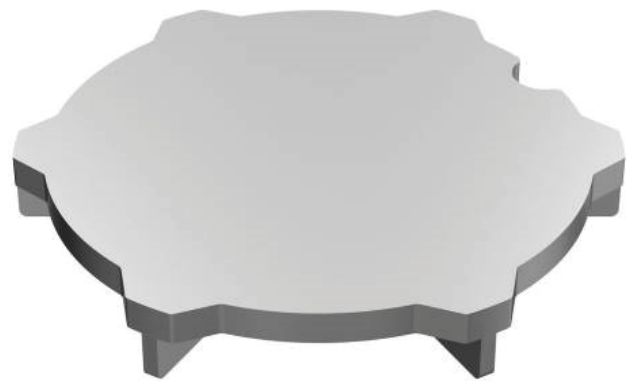
Mesh anti-slip, mesh 23 x 23 mm, anti-slip surface.

The grating meets load class L15 according to EN 1253.



Solid Plate, side slot and easy removable opening.

The grating meets the load class M125 according to EN 1253.



Plate, solid lid with seal, gas and watertight, with suction cup. The grating meets load class M125 according to EN 1253.



Ladder, with plain or anti-slip bars.

The grating meets load class M125 according to EN 1253. Complete welding according to EHEDG.

